



PUBLICAMUNDI
SCALABLE
REUSABLE
OPEN
GEOSPATIAL
DATA

Mapping API

In a few words

- Simple JavaScript API for enabling spatial data visualization
- Implements lightweight class wrappers for existing mapping frameworks (OpenLayers, Leaflet)
- Supports vector and raster data
- Mapping framework independence
- Target multiple platforms
- Currently implemented in <http://labs.geodata.gov.gr> resource preview



Features

- Instantiates class wrappers using dynamic script loading
- Allow access to internal objects programming API e.g. ol.Map or L.Map objects
- Configuration using JSON object
- User given popup handling control
- Optional layer switcher control to handle multiple layers



Configuration

- Inline configuration JSON object

```
var options = {
  target: 'map',
  center: [-10939408.106956497, 4561776.910611016],
  zoom: 4,
  layers: [{
    title: 'Open Street Maps',
    type: PublicaMundi.LayerType.TILE,
    url: 'http://{s}.tile.openstreetmap.org/{z}/{x}/{y}.png'
  }, {
    title: 'Crops',
    type: PublicaMundi.LayerType.WMS,
    url: 'http://webservices.nationalatlas.gov/wms/agriculture',
    params: { 'LAYERS': 'crop_1' }
  }]
};
var map = new PublicaMundi.Map(options);
```




```

<script src="lib/PublicaMundi/build/publicamundi.js" data-
library="ol"></script>
<script>
  PublicaMundi.noConflict();

  var options = {
    target: 'map',
    center: [2548716, 4743375],
    zoom: 6,
    layers: [{
      title: 'Open Street Maps',
      type: PublicaMundi.LayerType.TILE,
      url: 'http://{s}.tile.openstreetmap.org/{z}/{x}/
{y}.png'
    }]
  };

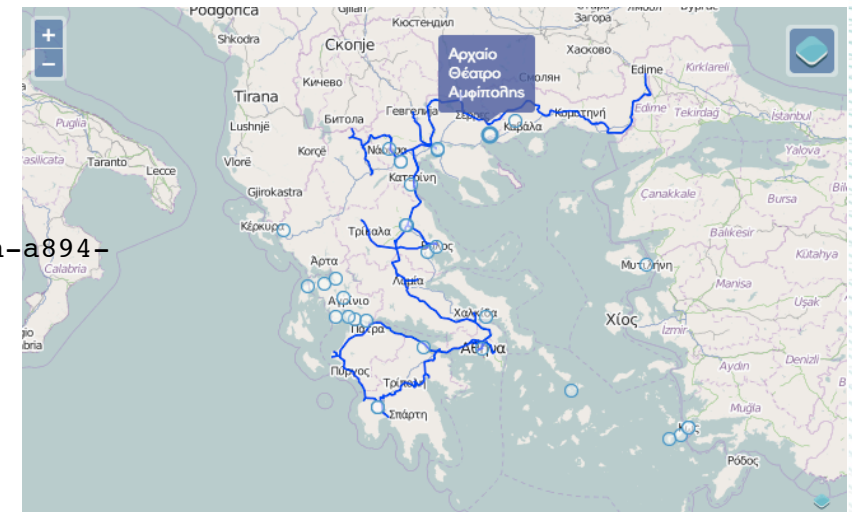
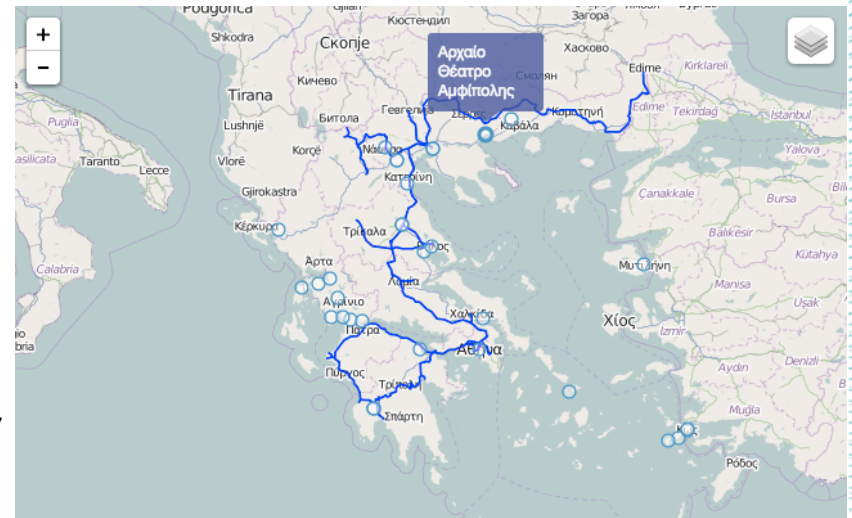
  PublicaMundi.ready(function () {

    var map = PublicaMundi.map(options);
    map.setLayerControl();

    var railway = map.createLayer({
      title: 'Railway Network',
      type: PublicaMundi.LayerType.WMS,
      url: 'http://labs.geodata.gov.gr/geoserver/wms',
      params: { 'layers' : 'publicamundi:c0b70f0a-515d-4a0a-a894-
abc412d5239e' }
    });

    var theaters = map.createLayer({
      title: 'Ancient Theaters',
      name: 'theaters',
      type: PublicaMundi.LayerType.KML,
      click: onFeatureClick,
      url: 'data/kml/archaia_theatra.kml',
    });
  });
</script>

```



See also

- Demo page:
<http://labs.geodata.gov.gr/mapping-api>
- Latest API version:
<https://github.com/PublicaMundi/MappingAPI>



Consortium



IMIS / Athena RC (Coordinator)

Research Center (GR) – Data Economy (open, big, linked)

rasdaman

SME (DE) – Big Geospatial Data



GeoLabs

SME (FR) – Processing Services



GET

SME (GR) – Spatial Data Infrastructures



Contact us



PUBLICA MUNDI

www.publicamundi.eu



Mapping API – Scenarios

- Used as part of the CKAN PublicaMundi extension
 - **Allow to preview resources with spatial data**
 - **Support proxy calls to remote servers for querying services e.g. WMS GetCapabilities**
 - **Render Data API results**
- Used as a standalone library
 - **Limited functionality due to same origin constraints**

